



500

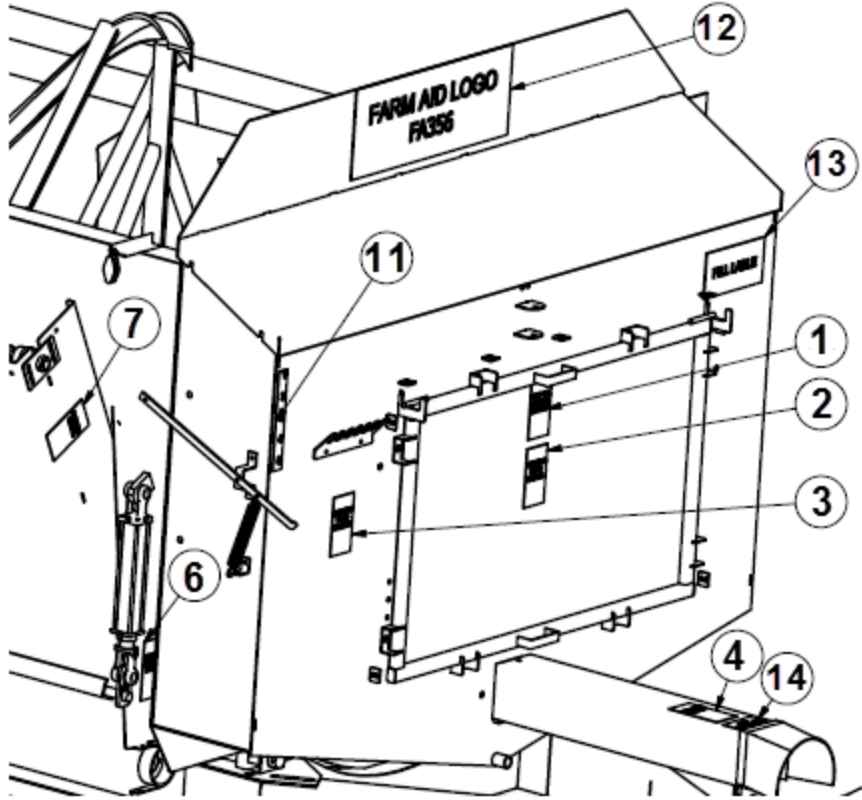
PART MANUAL

Revision 2024-07-11

Table of Contents

Page	Content
1	LABELS, FRONT
2	LABELS, BEHIND DOOR
3	LABELS REAR AND DISCHARGE SIDE
4	LABELS, LOW SIDE
5	FRONT EXTERNAL VIEW
6	FRONT EXTERNAL PARTS
7	GASKETS, SCALE SUPPORT AND PARTS
8	PTO
9	CHAIN ROUTING LEFT DISCHARGE
10	CHAIN ROUTING RIGHT DISCHARGE
11	SPRING TIGHTENED CHAIN ROUTING, LEFT
12	SPRING TIGHTENED CHAIN ROUTING, RIGHT
13	CHAIN CASE, LEFT HAND DISCHARGE
14	CHAIN CASE, LEFT HAND DISCHARGE
15	CHAIN CASE, RIGHT HAND DISCHARGE
16	CHAIN CASE, RIGHT HAND DISCHARGE
17	ELEVATOR VIEW
18	ELEVATOR PARTS
19	ELEVATOR OTHER
20	ELEVATOR MOTOR HOSES FOR AUTO ON
21	KICKER PARTS
22	SPIRAL VIEW
23	SPIRAL PARTS
24	HIGH ROUGHAGE SPIRAL VIEW
25	HIGH ROUGHAGE SPIRAL PARTS
26	SPINDLE, WHEEL HUB AND BEARINGS
27	REAR EXTERNAL
28	POLY LINERS, LEFT
29	POLY LINERS, RIGHT

RIGHT HAND DISCHARGE IS ILLUSTRATED. A LEFT HAND DISCHARGE WOULD BE A MIRROR OF THIS IMAGE.



7
DANGER
CHUTE

⚠ DANGER

STAY CLEAR OF CHUTE AREA!

CHUTE POSITION AND DISCHARGE CHAIN ARE REMOTELY CONTROLLED AND CAN OPERATE WITHOUT MIXER RUNNING. CHUTE RAISES AND LOWERS RAPIDLY, AND CHAIN STARTS WHEN CHUTE LOWERS.

6
WARNING
CRUSHING

⚠ WARNING



CRUSHING OF HAND OR FINGERS

TO PREVENT SERIOUS INJURY, STAY CLEAR OF MOVING PARTS.

1
WARNING
SHIELDS

⚠ WARNING



KEEP ALL SHIELD IN PLACE. KEEP HANDS AWAY FROM MOVING PARTS TO PREVENT SERIOUS INJURY OR DEATH.

2
WARNING
READ MANUAL

⚠ WARNING

TO PREVENT SERIOUS INJURY OR DEATH.

- READ AND UNDERSTAND OPERATOR'S MANUAL BEFORE USING. REVIEW ALL SAFETY PRECAUTIONS ANNUALLY.
- PLACE ALL CONTROLS IN NEUTRAL, STOP TRACTOR ENGINE, SET PARK BRAKE AND WAIT FOR ALL MOVING PARTS TO STOP BEFORE SERVICING, ADJUSTING, REPAIRING OR UNPLUGGING IMPLEMENT.
- DO NOT ALLOW RIDERS.
- SECURELY ATTACH TO TOWING UNIT USING A HARDENED PIN WITH A RETAINER AND AN AUXILIARY ATTACHING DEVICE.
- BE SURE ALL GUARD AND LOCKS ARE IN PLACE BEFORE STARTING.
- KEEP HANDS, FEET, HAIR AND CLOTHING AWAY FROM MOVING PARTS.
- BE SURE REFLECTORS AND SMV ARE VISIBLE BEFORE TRANSPORTING.
- DO NOT EXCEED A SAFE TRANSPORT SPEED.
- USE HAZARD FLASHERS ON TRACTOR WHEN TRANSPORTING.
- WHEN REPAIRING OR SERVICING IMPLEMENT, REFER TO OPERATOR'S MANUAL.

3
WARNING
HIGH PRESSURE

⚠ WARNING

HIGH PRESSURE



FLUID HAZARD

TO PREVENT SERIOUS INJURY, OR DEATH.

- RELIEVE PRESSURE ON HYDRAULIC SYSTEM BEFORE SERVICING OR DISCONNECTING HOSES.
- WEAR PROPER HAND AND EYE PROTECTION WHEN SEARCHING FOR LEAKS.
- USE WOOD OR CARDBOARD INSTEAD OF HANDS.
- KEEP ALL COMPONENTS IN GOOD REPAIR.

4
DANGER
DRIVELINE

⚠ DANGER

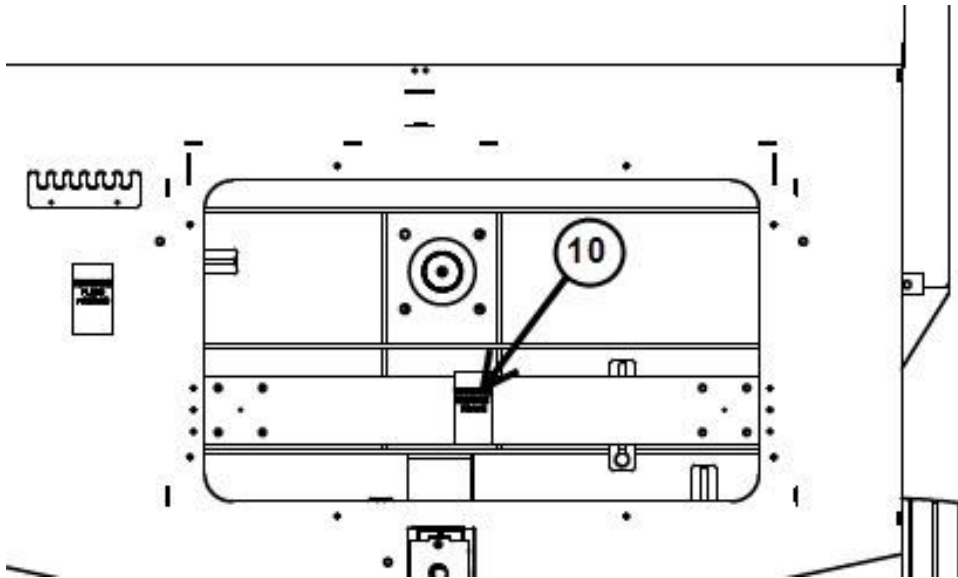


ROTATING DRIVELINE HAZARD

TO PREVENT SERIOUS INJURY OR DEATH FROM ROTATING DRIVELINE.

- KEEP ALL GUARDS IN PLACE WHEN OPERATING.
- KEEP HANDS, FEET, HAIR, AND CLOTHING AWAY FROM MOVING PARTS.

RIGHT HAND DISCHARGE IS ILLUSTRATED. A LEFT HAND DISCHARGED WOULD BE A MIRROR OF THIS IMAGE.



FRONT
SHOWN WITH DOOR REMOVED

10
WARNING
MOVING PARTS

! WARNING

MOVING PART HAZARD

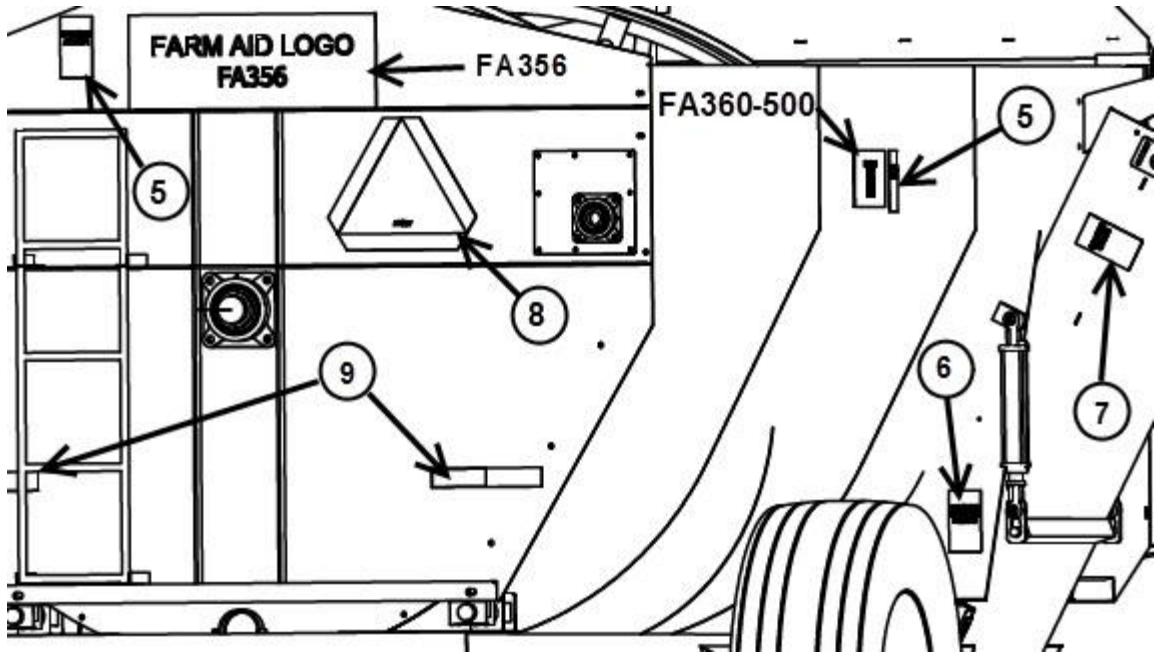


TO PREVENT SERIOUS INJURY, OR DEATH FROM MOVING PARTS:

- CLOSE AND SECURE GUARDS AND SHIELDS BEFORE STARTING.
- KEEP HANDS, FEET, HAIR, AND CLOTHING AWAY FROM MOVING PARTS.
- DISCONNECT AND LOCKOUT POWER SOURCE BEFORE ADJUSTING OR SERVICING.
- DO NOT STAND OR CLIMB ON MACHINE WHEN OPERATING.

LABEL, BEHIND DOOR

RIGHT HAND DISCHARGE IS ILLUSTRATED. A LEFT HAND DISCHARGE WOULD BE A MIRROR OF THIS IMAGE.



5
DANGER
AUGER

⚠ DANGER
NO ENTRY

AUGER ENTANGLEMENT HAZARD

TO PREVENT SERIOUS INJURY OR DEATH FROM ROTATING PARTS.

- DO NOT ENTER MIXING CHAMBER WHEN TRACTOR IS RUNNING OR WHEN AUGER IS IN MOTION.
- KEEP HANDS AND FEET AWAY FROM MIXING CHAMBER.

6
WARNING
CRUSHING

⚠ WARNING

CRUSHING OF HAND OR FINGERS

TO PREVENT SERIOUS INJURY, STAY CLEAR OF MOVING PARTS.

7
DANGER
CHUTE

⚠ DANGER

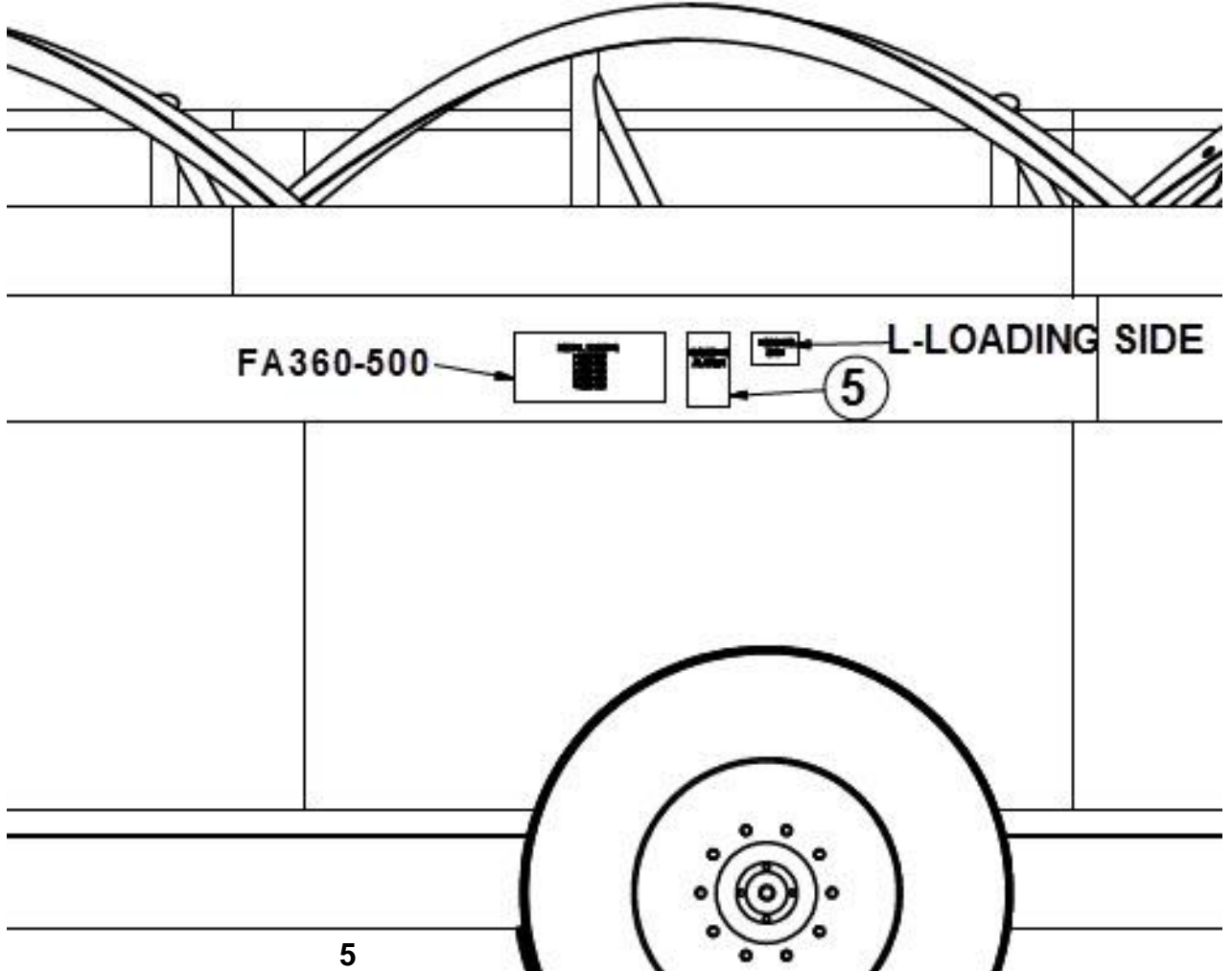
STAY CLEAR OF CHUTE AREA!

CHUTE POSITION AND DISCHARGE CHAIN ARE REMOTELY CONTROLLED AND CAN OPERATE WITHOUT MIXER RUNNING. CHUTE RAISES AND LOWERS RAPIDLY, AND CHAIN STARTS WHEN CHUTE LOWERS.

8
SLOW MOVING
VEHICLE LABEL
P/N FA357

9
REFLECTIVE
LABEL
P/N FA359

RIGHT HAND DISCHARGE IS ILLUSTRATED. A LEFT HAND DISCHARGE WOULD BE A MIRROR OF THIS IMAGE.

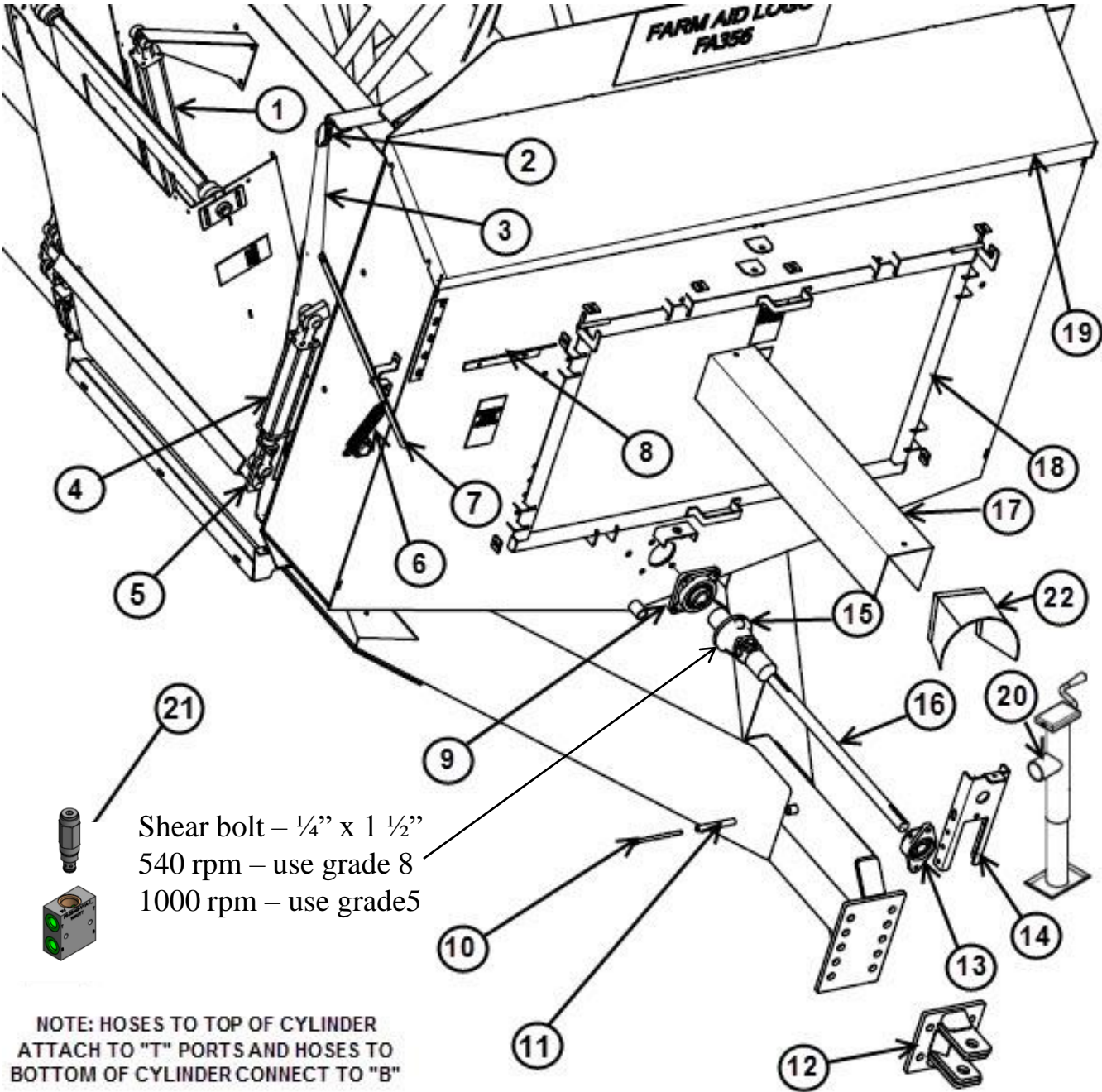


5
DANGER
AUGER



EXTERNAL FRONT, MODEL 500

RIGHT HAND DISCHARGE IS ILLUSTRATED. A LEFT HAND DISCHARGE WOULD BE A MIRROR OF THIS IMAGE.

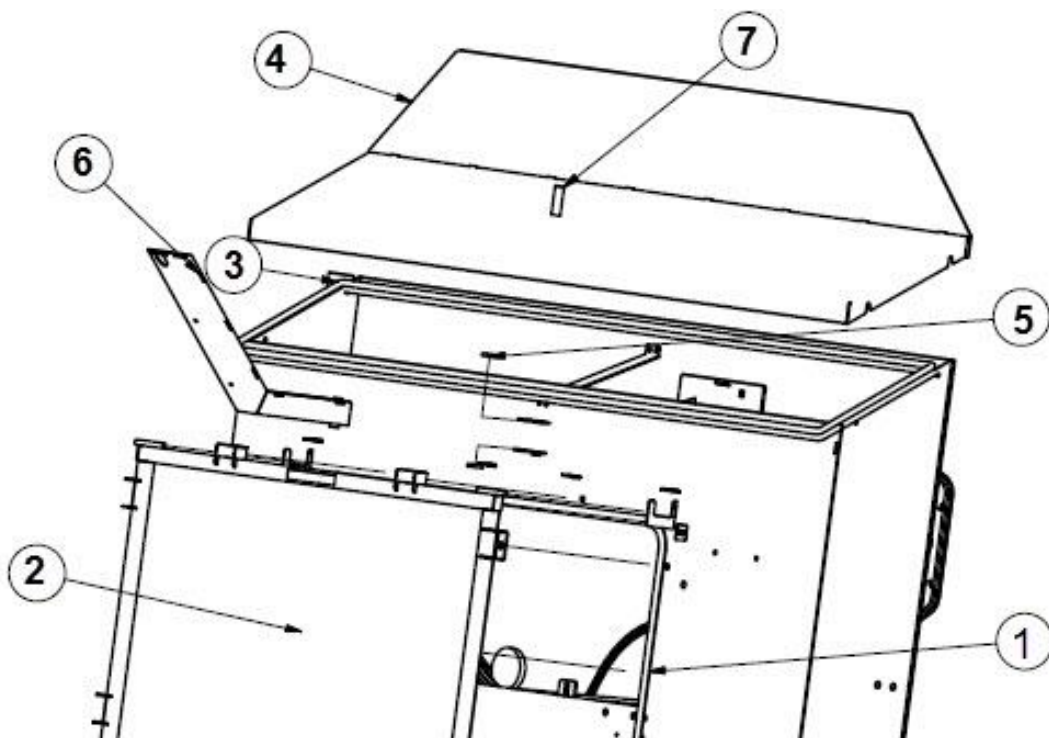


EXTERNAL FRONT, MODEL 500

ITEM	PART NUMBER	DESCRIPTION
1	FA20-24	Hyd Cylinder, 2.0 Bore X 24.0 Stroke -- Repair Kit is FA639572
2	FA800	Pulley, Indicator Bar
3	FA541-500	Cable, Indicator Bar for a 500
4	FA20-10	Hyd Cylinder, 2.00 Bore X 10.0 Stroke -- Repair Kit is FA639572
5	FA520	Cylinder Connector
6	FA277	Spring, Door Indicator
7	FA353-24	Door Indicator Bar, Model 500
8	B5FA430	Hydraulic Hose Bracket
9*	FA1101FB-4	1 1/2" 4 Bolt Flange Block Bearing (Set Screw)
10*	Bolt	3/8" X 6" H
11*	FA409P rev1	PTO Pivot 5/8" OD X 4 7/8"
12	FA604	Hitch Replacement --Wear Plate Only FA 603
	FAC604CU	Adjustable hitch and mount (10 Bolt) UNPAINTED
13	FA101FB-2	1-1/4" 2 Bolt Flange Block
14*	FA409	Hinged PTO Stand
15*	FAC1414D-SY	Ball Shear W/ 12N Cross Bearing
16*	FAC1401E	PTO Extension Shaft For 500
17*	FAC1410S	PTO Extension Shield For 500
18	FAC108-1	Cover - ser. no. less than 2345
	FAC108-2	Cover - ser. no. after 2344
19	FAC109-1	Cap - ser. no. less than 2345
	FAC109-2	Cap - ser. no. after 2344
20	FAC-604S	Jack
21	FA020-VALVE	In Line Relief Valve
22*	FA411B	Rubber Guard. PTO
Not Shown	FAC1412S	Metal Shield for CV PTOs

* Parts not used with CV PTOs

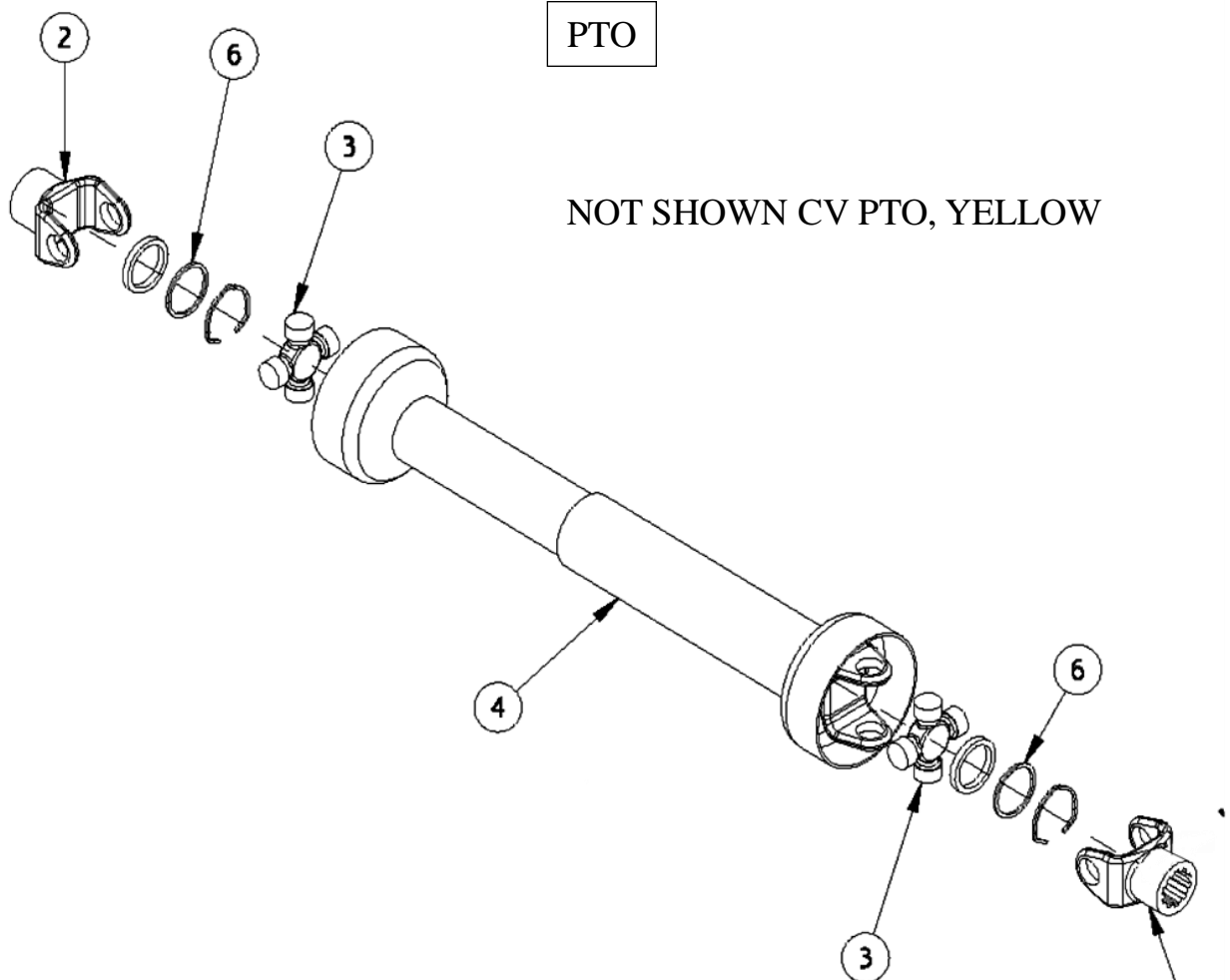
GASKETS, SCALE SUPPORT AND PARTS



ITEM	PART NUMBER	DESCRIPTION
1	FAC108SEAL	Cover Gasket
2	FAC108-1	Cover - ser. no. less than 2345
	FAC108-2	Cover - ser. no. after 2344
3	FAC109SEAL	Cap Gasket
4	FAC109-1	Cap - ser. no. less than 2345
	FAC109-2	Cap - ser. no. after 2344
5	FAC135	Shock Absorber-500 1" ID
6	FAC122	Scale Arm
	FAC122PIVOT	Scale Arm Pivot tube
	SWT17807-0108	Rubber Mounts for Weigh-Tronix scales
	SWT12339-0015	Scale taper Bracket for Weigh-Tronix
	SWT21594-0370	2.50" Weigh-Tronix Weigh Bar
	SWT19219-0015	Summing Box Assy {Weigh Tronix J Box}
	SWT19266-0041	Power Cable, 12' Weigh-Tronix
	SWT23581-0017	5 pin pig tale for Weigh-Tronix bar
	SDS403335	Power cord – Digi-Star
	SDS404930	Junction box – Digi-Star-Lever
	SDS141837	cable - 30' J box
	SDS146110	2.50" Digi-Star Weigh Bar (30' cable)

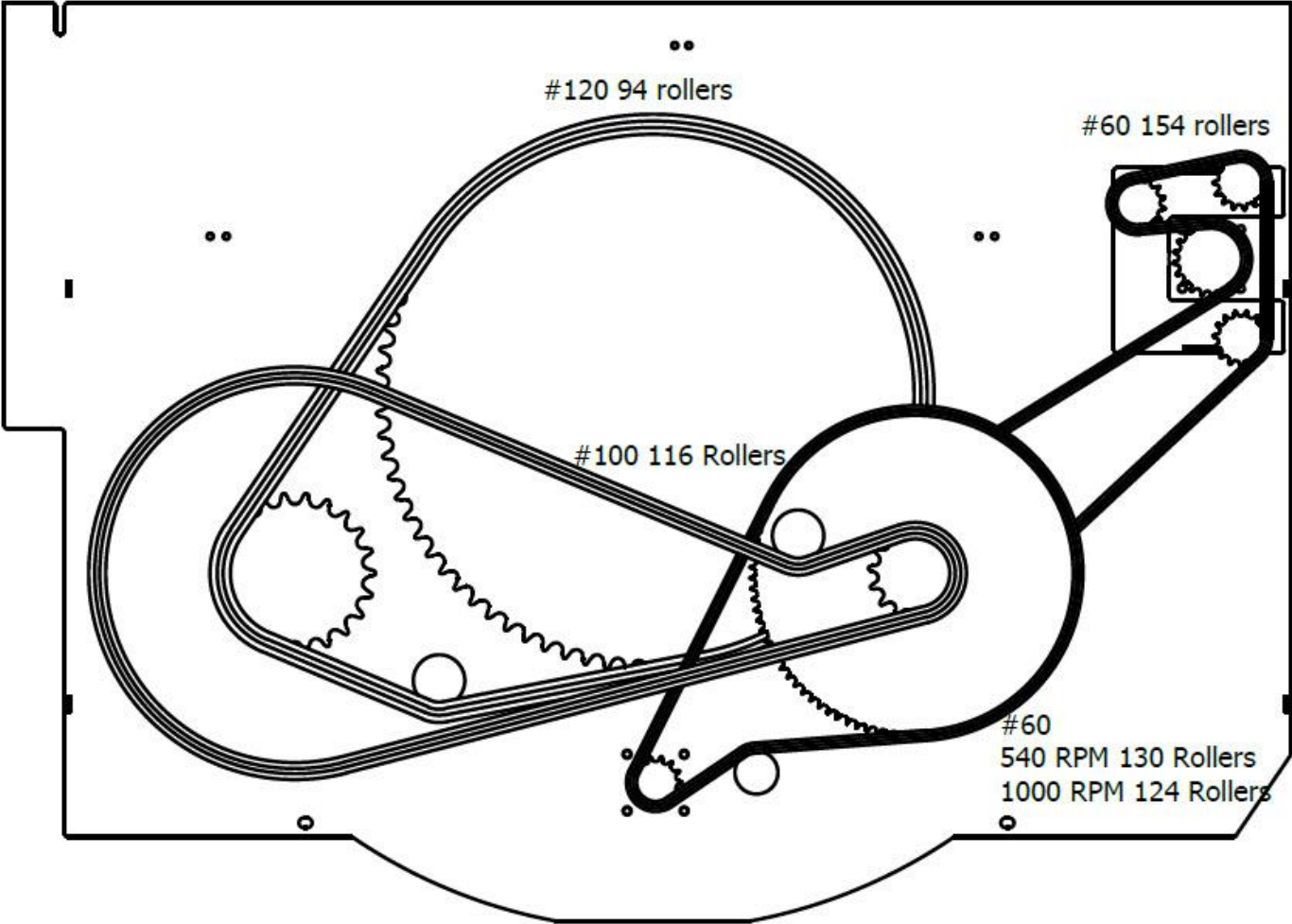
PTO

NOT SHOWN CV PTO, YELLOW

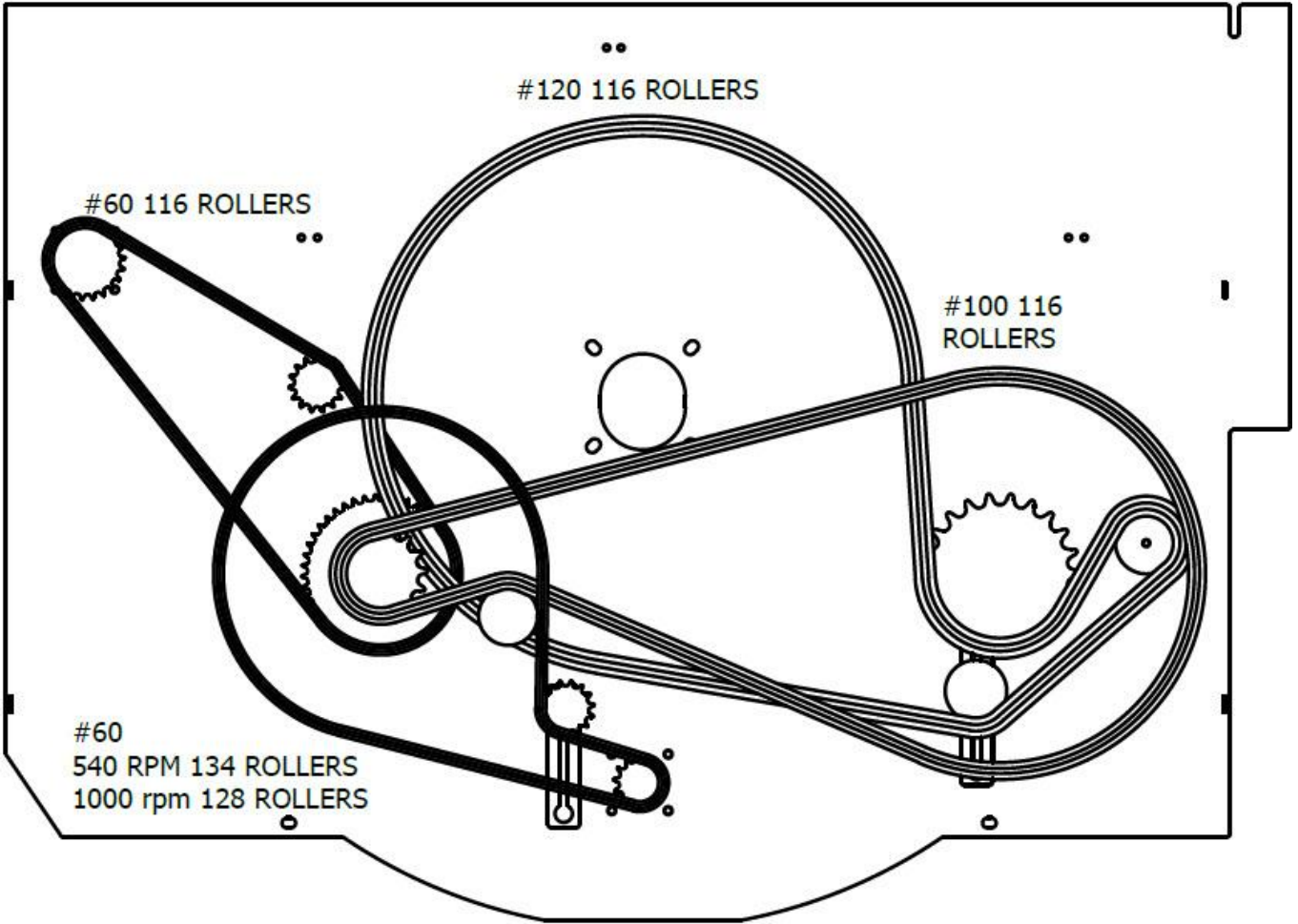


ITEM	PART NUMBER	DESCRIPTION
1	FA 413	6 SPLINE, 1-3/8 SNAP BALL TYPE YOKE
1	FA 413-21 (1000 RPM)	21 SPLINE, 1-3/8 SNAP BALL TYPE YOKE
1	FA 417W	REPAIR KIT FOR SNAP BALL YOKE
2	FA 414	1-1/4 ROUND YOKE, 12 SERIES
3	FA 415	CROSS & BEARING KIT, 12 SERIES
4	FA 416W	BLACK PLASTIC PTO SHIELD
6	FA 416BKW	SHIELD BEARING KIT
	FAC1412-21	COMPLETE 1,000 PTO SHAFT
	FAC1421-6	COMPLETE 540 SHAFT
	FAC1412-BUTTON	YOKE REPLACEMENT BUTTON
	FAC1412-SHIELD	COMPLETE SHIELD FOR YELLOW PTO

CHAIN ROUTING, LEFT DISCHARGE

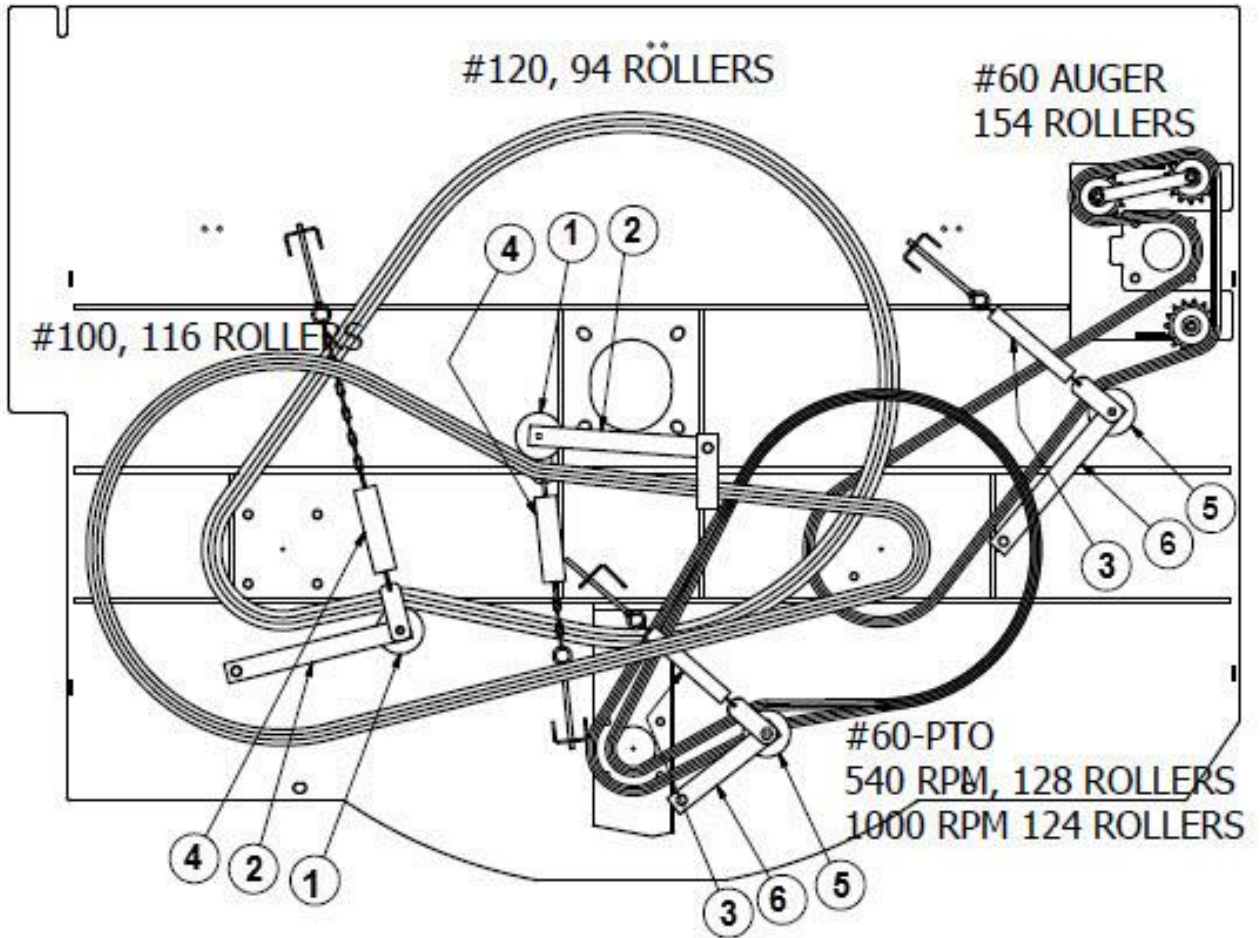


CHAIN ROUTING, RIGHT DISCHARGE



SPRING TIGHTENED CHAIN ROUTING, LEFT DISCHARGE

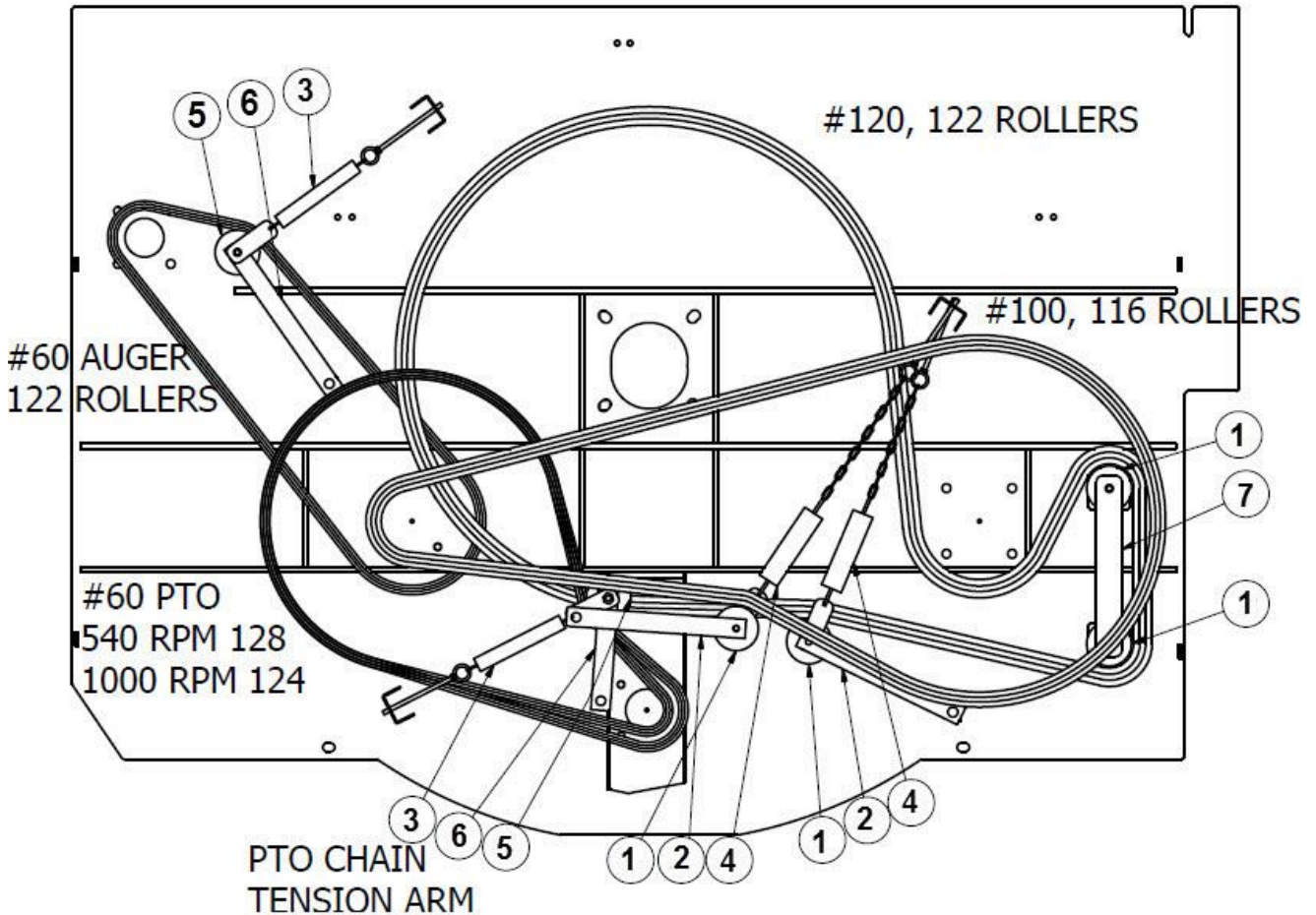
500 MIXERS WITH S/N GREATER THAN 2370 HAVE SPRING TIGHTENED CHAINS. THEY USE THE SAME SHAFTS AND BEARINGS AS PREVIOUS MIXERS. THEY HAVE THE CHAIN TENSIONERS SHOWN BELOW.



ITEM	PART NUMBER	DESCRIPTION
1	FAC1513	500 POLY ROLLER, ~3" WIDE
1	FAC1513B	500 POLY ROLLER BUSHING
2	FAC1250	500 CHAIN TENSION PIVOT ARM 12.5"
3	FAC273	SPRING FOR #60 CHAINS
4	FAC275	500 CHAIN TENSION SPRING FOR #120 AND #100
5	FAC1547	500 PTO POLY ROLLER, 1.5" WIDE
5	FAC1547B	500 PTO POLY ROLLER BUSHING
6	FAC1080	500 PTO CHAIN TENSION PIVOT ARM 8"

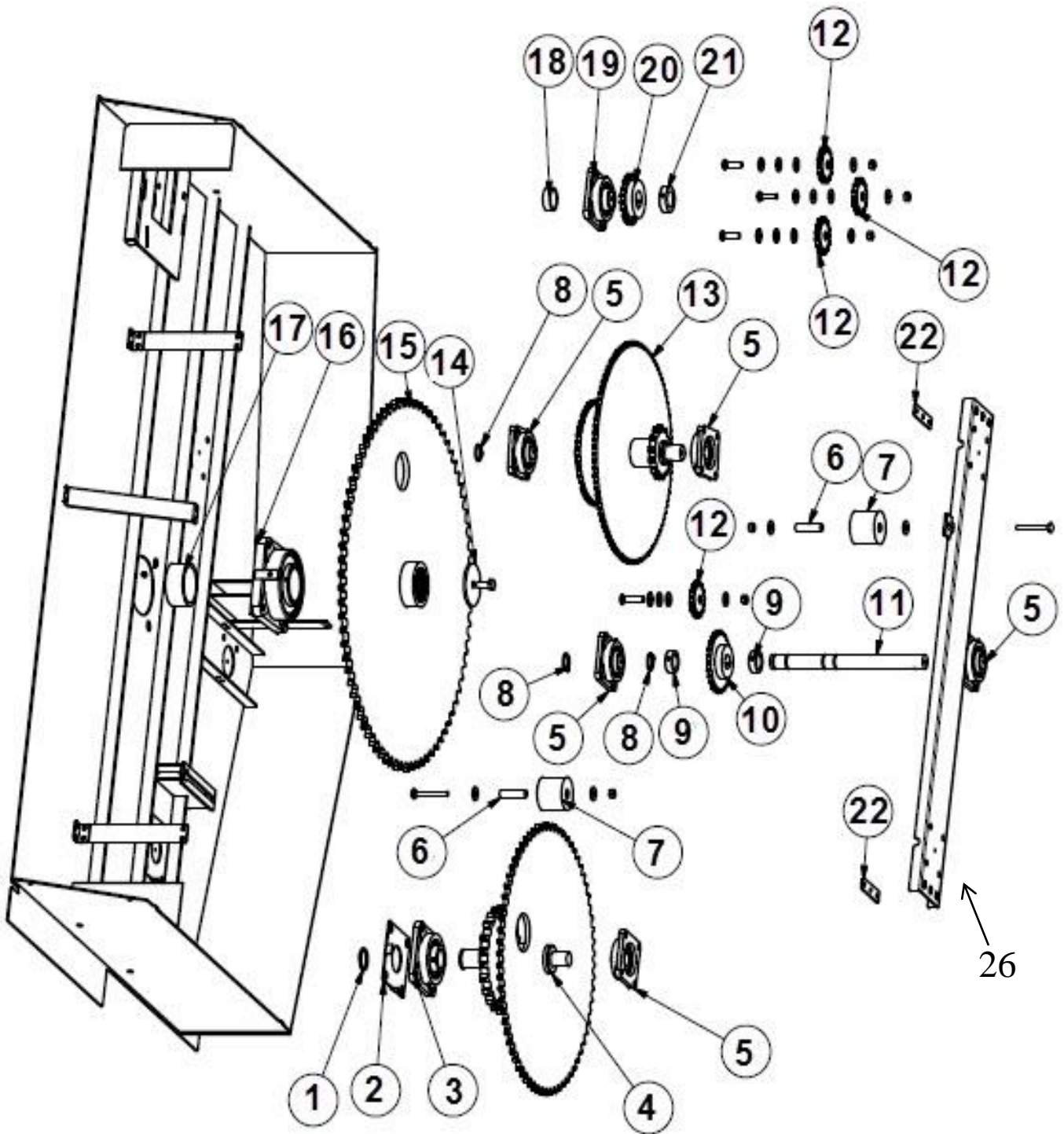
SPRING TIGHTENED CHAIN ROUTING, RIGHT DISCHARGE

500 MIXERS WITH S/N GREATER THAN 2370 HAVE SPRING TIGHTENED CHAINS. THEY USE THE SAME SHAFTS AND BEARINGS AS PREVIOUS MIXERS. THEY HAVE THE CHAIN TENSIONERS SHOWN BELOW.



ITEM	PART NUMBER	DESCRIPTION
1	FAC1513	500 POLY ROLLER, ~3" WIDE
1	FAC1513B	500 POLY ROLLER BUSHING
2	FAC1250	500 CHAIN TENSION PIVOT ARM 12.5"
3	FAC273	SPRING FOR #60 CHAINS
4	FAC275	500 CHAIN TENSION SPRING FOR #120 AND #100
5	FAC1547	500 PTO POLY ROLLER, 1.5" WIDE
5	FAC1547B	500 PTO POLY ROLLER BUSHING
6	FAC1080	500 PTO CHAIN TENSION PIVOT ARM 8"
7	14R-1-120 REV	REVERSE STRAP BETWEEN IDLERS

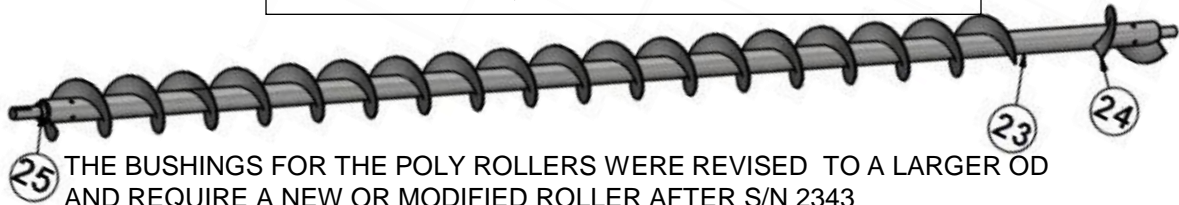
CHAIN CASE, LEFT HAND DISCHARGE



NOTES

ALL THREE SHAFTS ARE HELD TO THE INSIDE BEARING BY A SNAP RING
 THE POLY ROLLER FOR THE #100 CHAIN IS ALWAYS ON THE RETURN
 (SMALL AUGER) SIDE

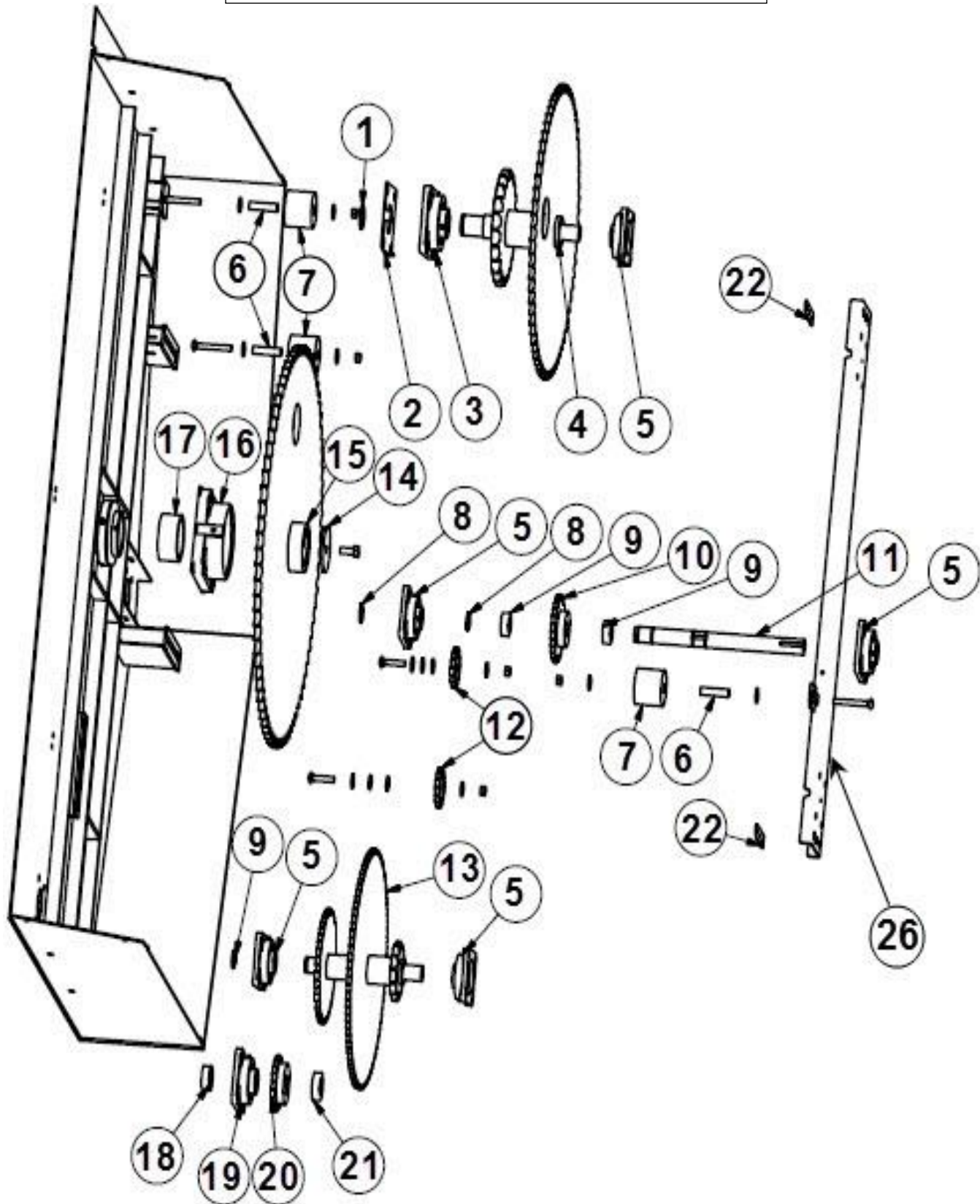
CHAIN CASE, LEFT HAND DISCHARGE



THE BUSHINGS FOR THE POLY ROLLERS WERE REVISED TO A LARGER OD AND REQUIRE A NEW OR MODIFIED ROLLER AFTER S/N 2343

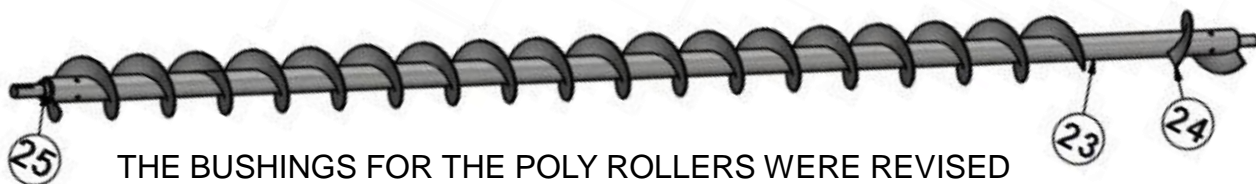
ITEM	PART NUMBER	DESCRIPTION
1	SR-2.00 X .125	EXTRA WIDE SNAP RING FOR 2" SHAFT
2	FAC1103SHIM	SHIM BEHIND 2" 4 BOLT FLANGE BEARING
3	FAC1103FB-4	2" 4 bolt flange block w/bearing
4	FAC146	JACKSHAFT #2 120 X 22 - 100 X 70 SPROCKET WELDMENT
5	FAC1101FB-4	1.5" 4 bolt flange block w/bearing
6	FAC525B-1	BUSHING 500 UHMW ROLLER. 1.25 OD .5 ID X 3
6	FAC525B	BUSHING 500 UHMW ROLLER. 1.25 OD .75 ID X 3 S/N 2344 - S/N2370
7	FAC525	UHMW ROLLER 500 3.5" OD 1.25 ID X 3
8	SR-1.50 X .125	EXTRA WIDE SNAP RING FOR 1.5" SHAFT
9	FA207LC	1.5" LOCKING COLLAR
10	60B14H-1.5	1,000 RPM INPUT SPROCKET ON PTO SHAFT
10	60B26H-1.5	540 RPM INPUT SPROCKET ON PTO SHAFT
11	FAC447	PTO INPUT SHAFT 1 1/2" x 18.2"
12	FA210M	6015 IDLER SPROCKET, 1/2" BORE
12	FAC60BB15-5/8	6015 IDLER SPROCKET, 5/8" BORE S/N 2344 - S/N2370
13	FAC145	JACKSHAFT #1 60 X 45-60 X 96-100 X 15 SPROCKET WELDMENT
14	FAC144WASH	WASHER ON FINAL DRIVE SPROCKET
15	FAC144	FINAL DRIVE SPROCKET 120 X 80 WELDMENT
16	FAC1105	3.50" 4 BOLT FLANGE BLOCK BEARING SET SCREW
17	FAC144SHIM	SHIM BETWEEN SPIRAL AND THE DRIVE SPROCKET
18	FAC5714SHIM	SHIM BETWEEN AUGER AND BEARING
19	FAC1102FB-4	1 3/4" 4 BOLT FLANGE BLOCK W/BEARING
20	60B21H-1.75	500 AUGER DRIVE SPROCKET
21	FAC2207LC	1.75" LOCKING COLLAR
22	FAC146WASH	WASHER FOR BOLTS FOR JACKSHAFT SUPPORT
23	FAC5714	COMPLETE AUGER FOR 500 SPECIFY R OR L
24	FAC5714LSECT	LEFT SECTIONAL FLIGHTING, EACH FLIGHT IS 10" ALONG THE AUGER
25	FAC5714SHAFT	AUGER DRIVE SHAFT, REQUIRES MACHINING TO INSTALL
26	500 JACKSHAFT SUPPORT see→	S/N required -- 0 to 2343 is design 1; 2344 to 2370 is design 2; after 2370 is design 3 and specify L or R. Call with S/N to order

CHAIN CASE, RIGHT HAND DISCHARGE



CHAIN CASE, RIGHT HAND DISCHARGE

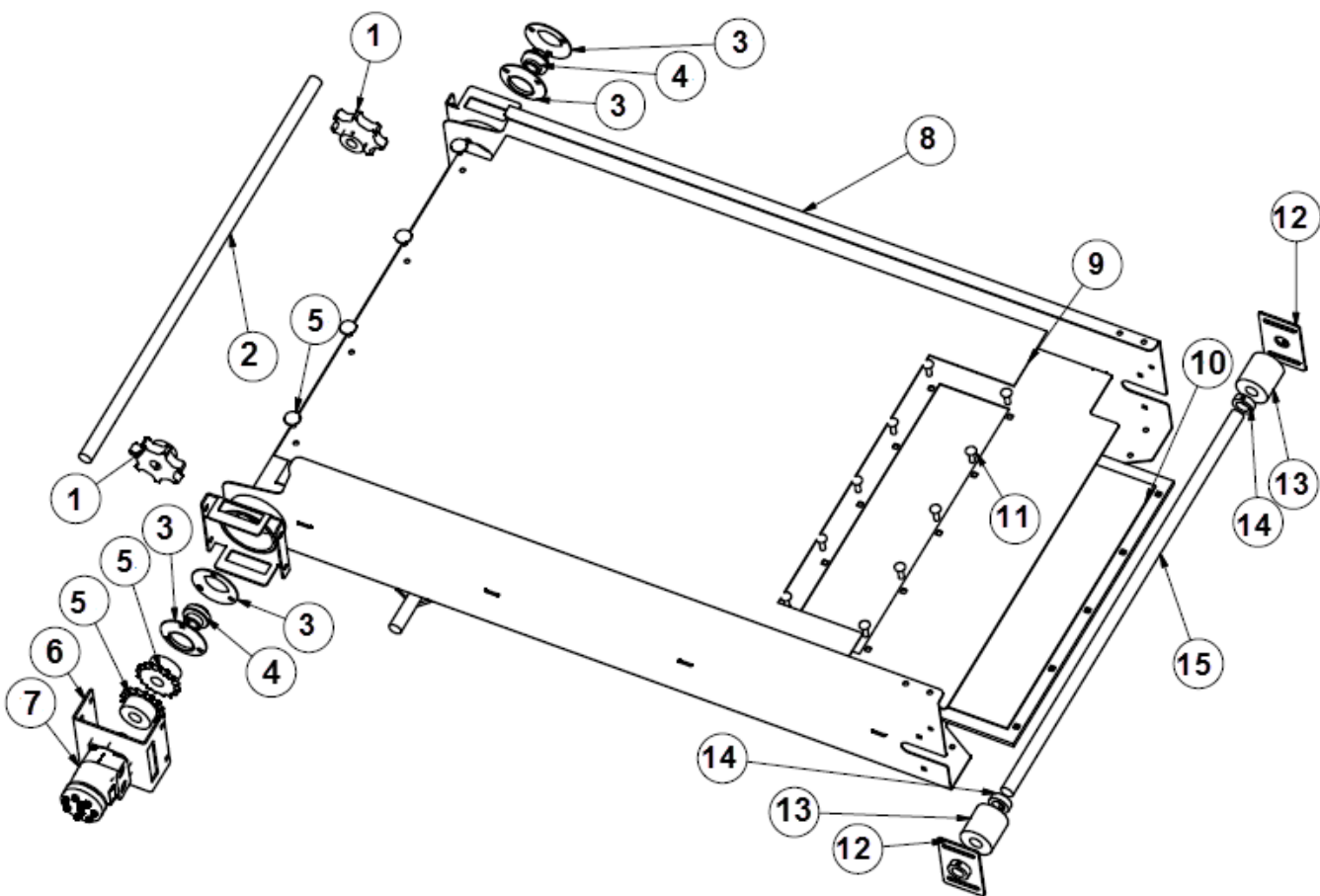
CHAIN CASE, RIGHT HAND DISCHARGE



THE BUSHINGS FOR THE POLY ROLLERS WERE REVISED STARTING S/N 2344 TO A LARGER OD AND REQUIRE A NEW OR MODIFIED ROLLER.

ITEM	PART NUMBER	DESCRIPTION
1	SR-2.00 X .125	EXTRA WIDE SNAP RING FOR 2" SHAFT
2	FAC1103SHIM	SHIM BEHIND 2" 4 BOLT FLANGE BEARING
3	FAC1103FB-4	2" 4 bolt flange block w/bearing
4	FAC146	JACKSHAFT #2 120 X 22 - 100 X 70 SPROCKET WELDMENT
5	FAC1101FB-4	1.5" 4 bolt flange block w/bearing
6	FAC525B-1	BUSHING FOR 500 UHMW ROLLER. .1.25 OD .5 ID X 3
7	FAC525	UHMW ROLLER FOR 500 3.5" OD 1.25 ID X 3
8	SR-1.50 X .125	EXTRA WIDE SNAP RING FOR 1.5" SHAFT
9	FA207LC	1.5" LOCKING COLLAR
10	60B14H-1.50	1,000 RPM INPUT SPROCKET ON PTO SHAFT
10	60B26H-1.50	540 RPM INPUT SPROCKET ON PTO SHAFT
11	FAC447	PTO INPUT SHAFT 1 1/2" x 18.2"
12	FA210M	6015 idler sprocket
13	FAC145	JACKSHAFT #1 60 X 45-60 X 96-100 X 15 SPROCKET WELDMENT
14	FAC144WASH	WASHER ON FINAL DRIVE SPROCKET
15	FAC144	FINAL DRIVE SPROCKET 120 X 80 WELDMENT
16	FAC1105	3.50" 4 BOLT FLANGE BLOCK BEARING SET SCREW
17	FAC144SHIM	SHIM BETWEEN SPIRAL AND THE DRIVE SPROCKET
18	FAC5714SHIM	SHIM BETWEEN AUGER AND BEARING
19	FAC1102FB-4	1 3/4" 4 BOLT FLANGE BLOCK W/BEARING
20	60B21H-1.75	500 AUGER DRIVE SPROCKET
21	FAC2207LC	1.75" LOCKING COLLAR
22	FAC146WASH	WASHER FOR BOLTS FOR JACKSHAFT SUPPORT
23	FAC5714	COMPLETE AUGER FOR 500 SPECIFY RIGHT
24	FAC5714SECT	SECTIONAL FLIGHTING, EACH FLIGHT IS 10" LONG
25	FAC5714SHAFT	AUGER DRIVE SHAFT, REQUIRES MACHINING TO INSTALL
26	500 JACKSHAFT SUPPORT see→	S/N required -- 0 to 2343 is design 1; 2344 to 2370 is design 2; after 2370 is design 3 and specify L or R. Call with S/N to order

ELEVATOR

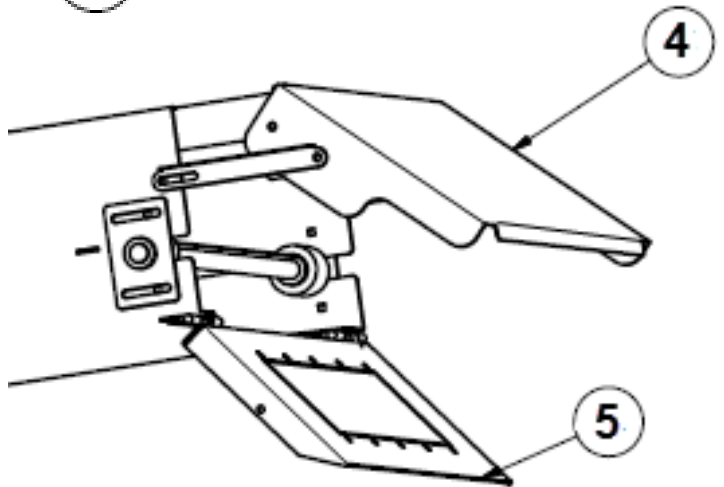
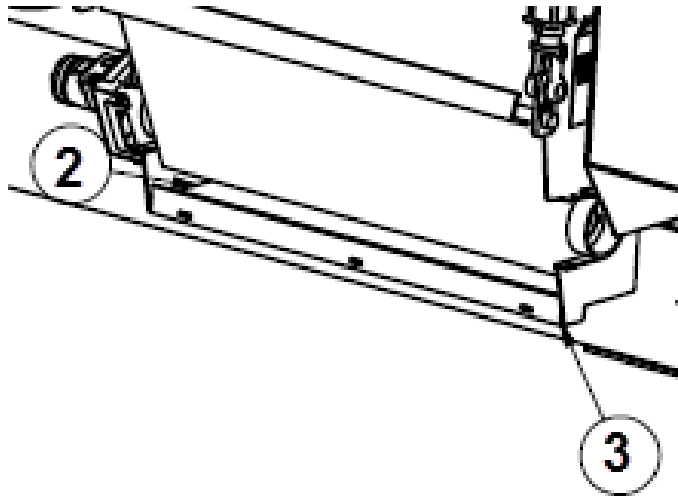


ELEVATOR

ITEM	PART NUMBER	DESCRIPTION
1	FA762A	762 SPROCKET, 7/8" BORE
2	FA510	SHAFT, 7/8" X 41"
3	FA107-3F	3 BOLT FLANGETTE
4	FA107	7/8" BEARING
5	FA529	MOTOR COUPLER (BOTH SPROCKETS AND #50 CHAIN)
6	Fa518-4a	BOLT ON HYDRAULIC MOTOR MOUNT
7	FAC509	HYDRAULIC MOTOR FOR TRAILER MOUNT
8	FA533M	ELEVATOR WELDMENT AND SPROCKETS, 3'
8	FA534M	ELEVATOR WELDMENT AND SPROCKETS, 4'
8	FA535M	ELEVATOR WELDMENT AND SPROCKETS, 5'
8	FA543M	COMPLETE ELEVATOR, 3' (WITH CHAIN AND ROLLERS)
8	FA544M	COMPLETE ELEVATOR, 4' (WITH CHAIN AND ROLLERS)
8	FA545M	COMPLETE ELEVATOR, 5' (WITH CHAIN AND ROLLERS)
9	FAC524-5	POLY FOR 5' ELEVATOR
9	FAC524-4	POLY FOR 4' ELEVATOR
9	FAC524-3	POLY FOR 3' ELEVATOR
10	FA748M	MAGNET
11		3/8" X 1" CARRIAGE BOLT
12	FA 512	SHAFT MOUNTING PLATE, UPPER ELEVATOR
13	FA 513	ELEVATOR IDLER ROLL
14	FA 514	SET COLLAR, 1"
15	FA 511	SHAFT, 1" X 38"
---	FA 515	CHAIN SLAT WITH LINKS
---	FA 516	CHAIN LINK, SINGLE W/PIN
---	FA509CP	CONNECTION PIN ONLY FOR CHAIN
---	FA 523	CHAIN, 3' ELEVATOR
---	FA 524	CHAIN, 4' ELEVATOR
---	FA 525	CHAIN, 5' ELEVATOR

ELEVATOR

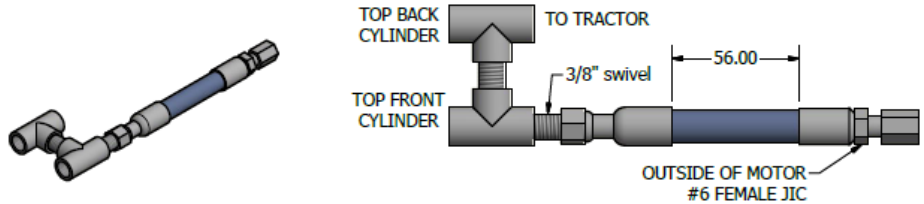
ELEVATOR OTHER



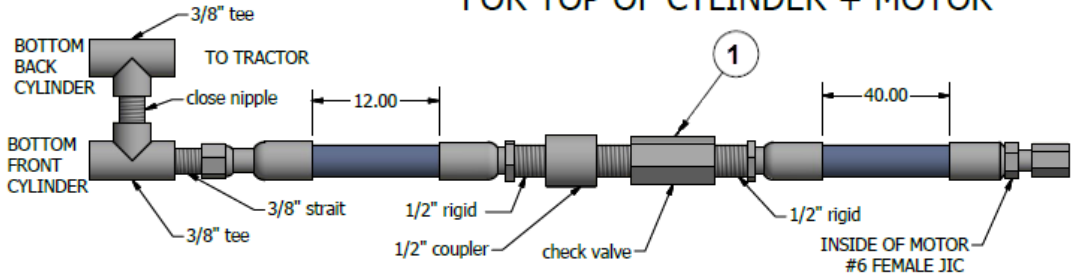
NOT SHOWN FA350S FEED DOOR

ITEM	PART NUMBER	DESCRIPTION
1	FA707VALVE	CHECK VALVE USED IN 4 HOSE SYSTEM
2	FAC535ES	POLY ELEVATOR SADDLE
3	FAC535RETAIN	500 ELEVATOR SADDLE RETAINER
4	FA520EH	ELEVATOR HOOD KIT WITH 4 BRACKETS
5	FA748-O-B	BREAK-A-WAY MAGNET KIT WITH CHAIN
6	HINGE, MAGNET LEFT	HINGES LEFT DISCHARGE
7	HINGE, MAGNET RIGHT	HINGES RIGHT DISCHARGE
8	FA748F	MAGNET FRAME

ELEVATOR MOTOR HOSES FOR AUTO ON



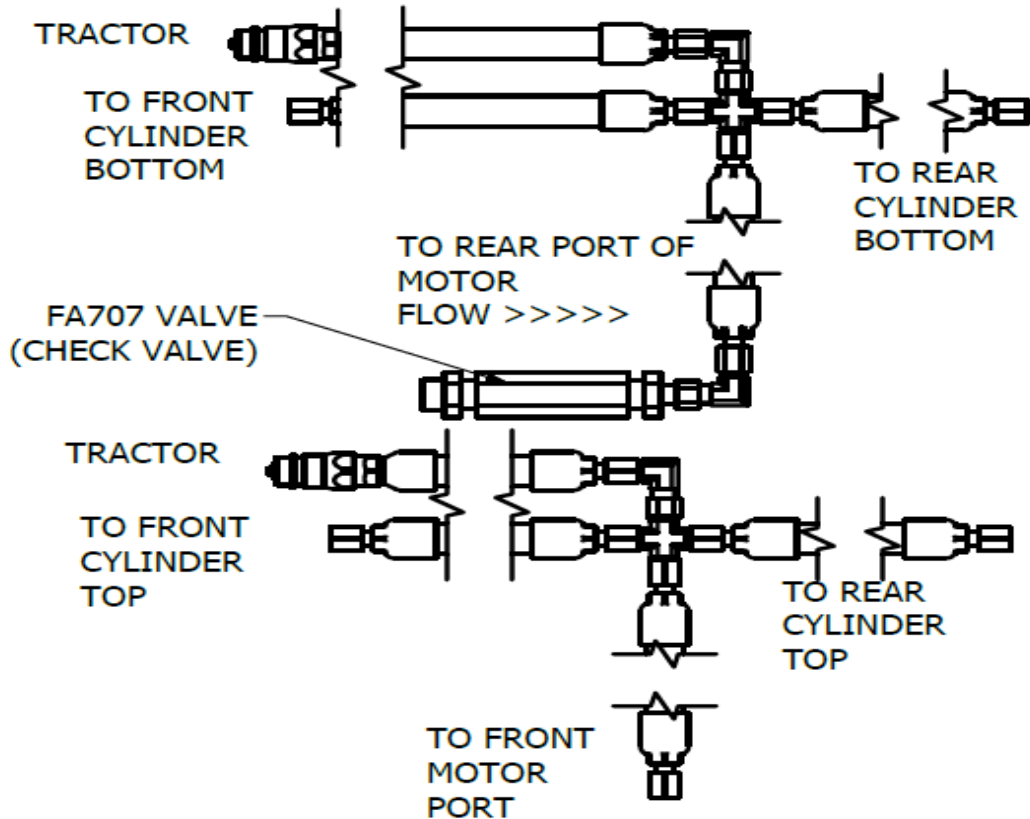
this pair of tees replace the single tee FOR TOP OF CYLINDER + MOTOR



this pair of tees replace the single tee FOR BOTTOM OF CYLINDER

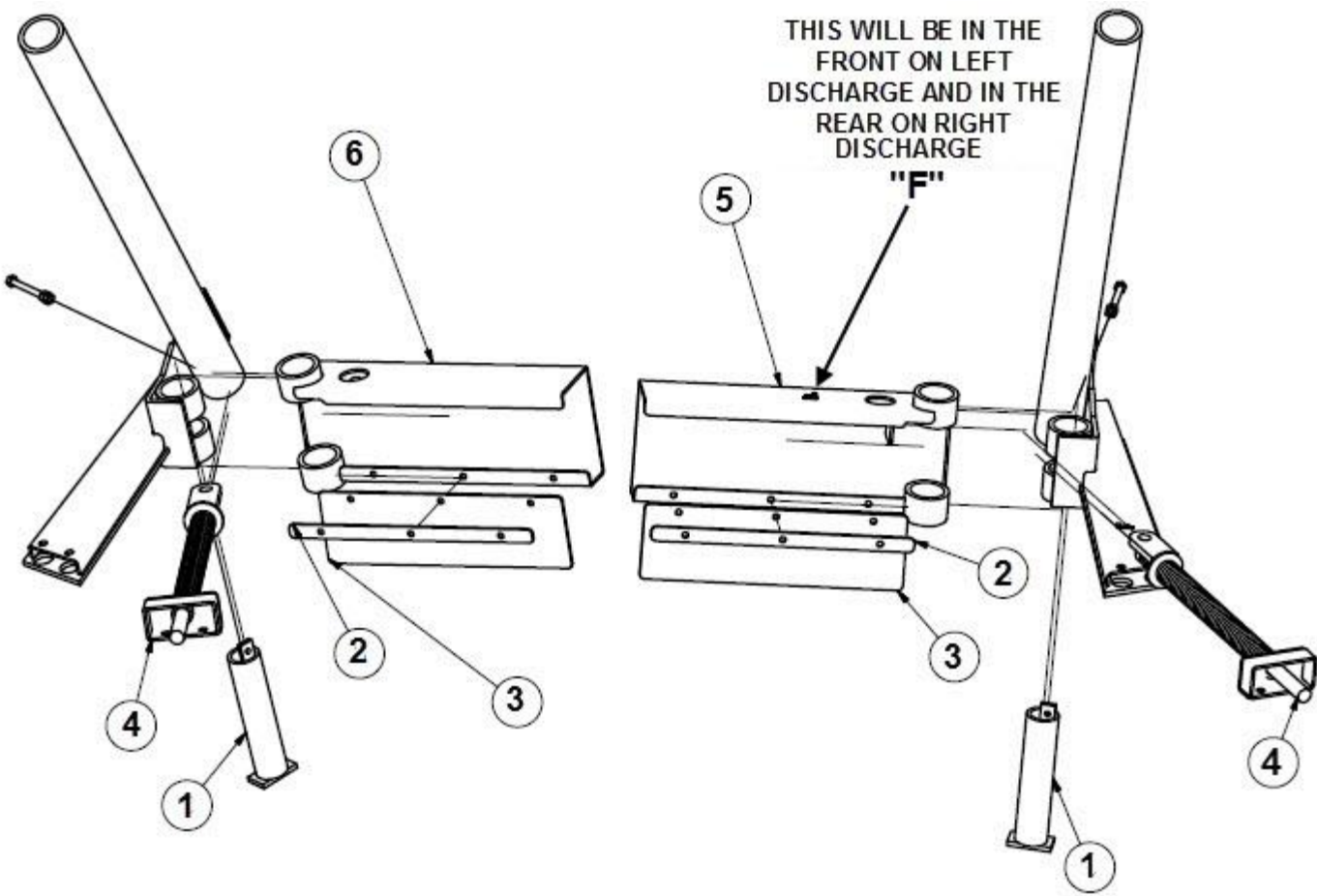
HYDRAULICS FOR 4 HOSE SYSTEM

AFTER S/N 2370 THE HOSES CHANGED



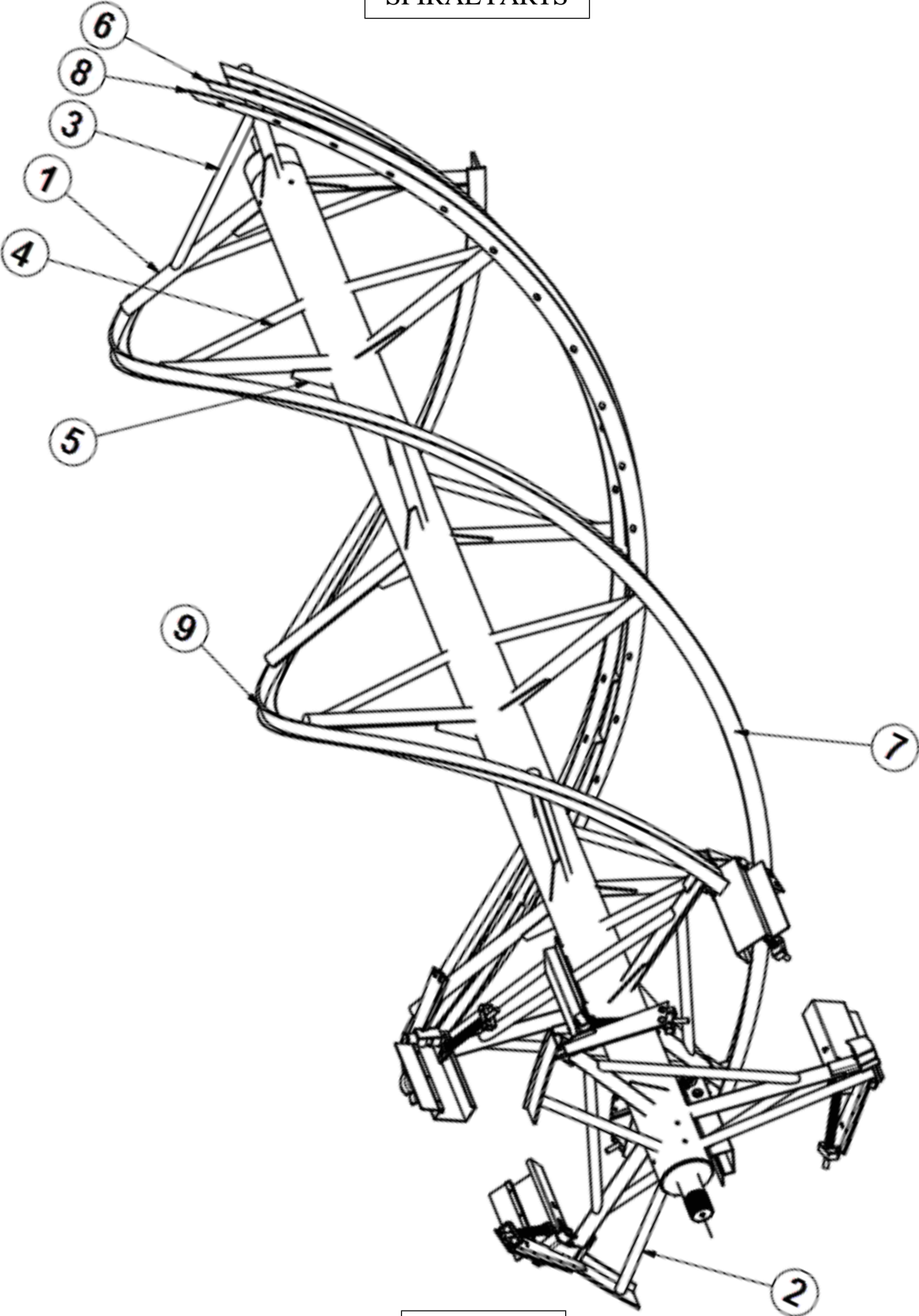
TO POWER THE DISCHARGE MOTOR THE TEES FOR THE CYLINDERS THAT RAISE AND LOWER THE ELEVATOR ARE REPLACED WITH CROSSES AND PLUMBED TO THE MOTOR

KICKER PARTS



ITEM	PART NUMBER	DESCRIPTION
1	FAC334PIVOT	KICKER PIVOT TUBE
2	FAC334STRAP	KICKER BELT STRAP
3	FAC334BELT	KICKER BELT
4	FAC3332C	500 KICKER SPRING WELDMENT, WITH SPRING ROD, SPRING GUIDE, AND SPRING.
RIGHT DISCHARGE		
ITEM	PART NUMBER	DESCRIPTION
5	FAC334R	REAR KICKER WITH BELT
6	FAC334F	FRONT KICKER WITH BELT
LEFT DISCHARGE		
ITEM	PART NUMBER	DESCRIPTION
5	FAC334F	FRONT KICKER WITH BELT
6	FAC334R	REAR KICKER WITH BELT

SPIRAL PARTS

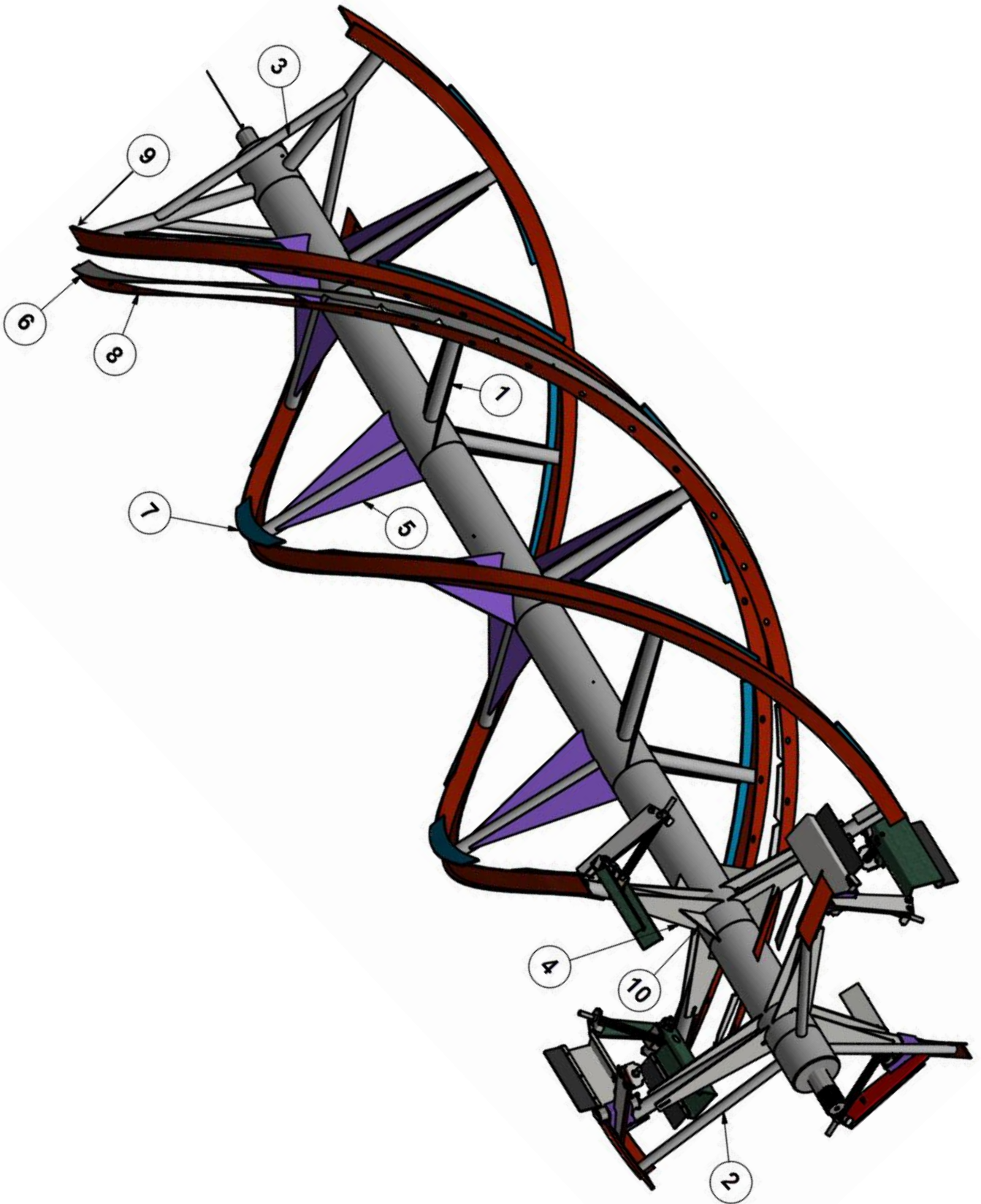


SPIRAL PARTS

SPIRAL PARTS

ITEM	PART NUMBER	DESCRIPTION
1	FAC816	500 SPOKE 2.38 X 29", 21 per
2	FAC814	500 SPOKE 1.66 X 29", 3 per
3	FA811	500 SPOKE TO SPOKE BRACE PIPE 1.66" x 34", 9 per
4	FA819	500 SPOKE BRACE PIPE 1.66" x 27", 15 per
5	FA817	SPIRAL GUSSET , 18 per
6	FAC717	SWEEP CLEAN BELT, (NEED 27 OF 5/16 X 1.5" BOLTS)
RIGHT DISCHARGE		
ITEM	PART NUMBER	DESCRIPTION ALL SOLD BY FOOT
--	FA 830BF	FRONT SPIRAL FACE MATERIAL (2' PER RIBBON)
--	FA 830BF-H	FRONT SPIRAL FACE MATERIAL W / HOLES,(2' PER RIBBON)
--	FA 830BS	FRONT SPIRAL SUPPORT MATERIAL, (2' PER RIBBON)
7	FA 830FF	BACK SPIRAL FACE MATERIAL (27' PER RIBBON PLUS SUPPORT PARTS)
8	FA 830FF-H	BACK SPIRAL FACE MATERIAL W / HOLES (27' PER RIBBON)
9	FA 830FS	BACK SPIRAL SUPPORT MATERIAL (27' PER RIBBON)
LEFT DISCHARGE		
ITEM	PART NUMBER	DESCRIPTION SOLD BY FOOT
--	FA 830FF	FRONT SPIRAL FACE MATERIAL (2' PER RIBBON)
--	FA 830FF-H	FRONT SPIRAL FACE MATERIAL W / HOLES (2' PER RIBBON)
--	FA 830FS	FRONT SPIRAL SUPPORT MATERIAL (2' PER RIBBON)
7	FA 830BF	BACK SPIRAL FACE MATERIAL(27' PER RIBBON PLUS SUPPORT PARTS)
8	FA 830BF-H	BACK SPIRAL FACE MATERIAL W / HOLES (27' PER RIBBON)
9	FA 830BS	BACK SPIRAL SUPPORT MATERIAL (27' PER RIBBON)

HIGH ROUGHAGE SPIRAL PARTS

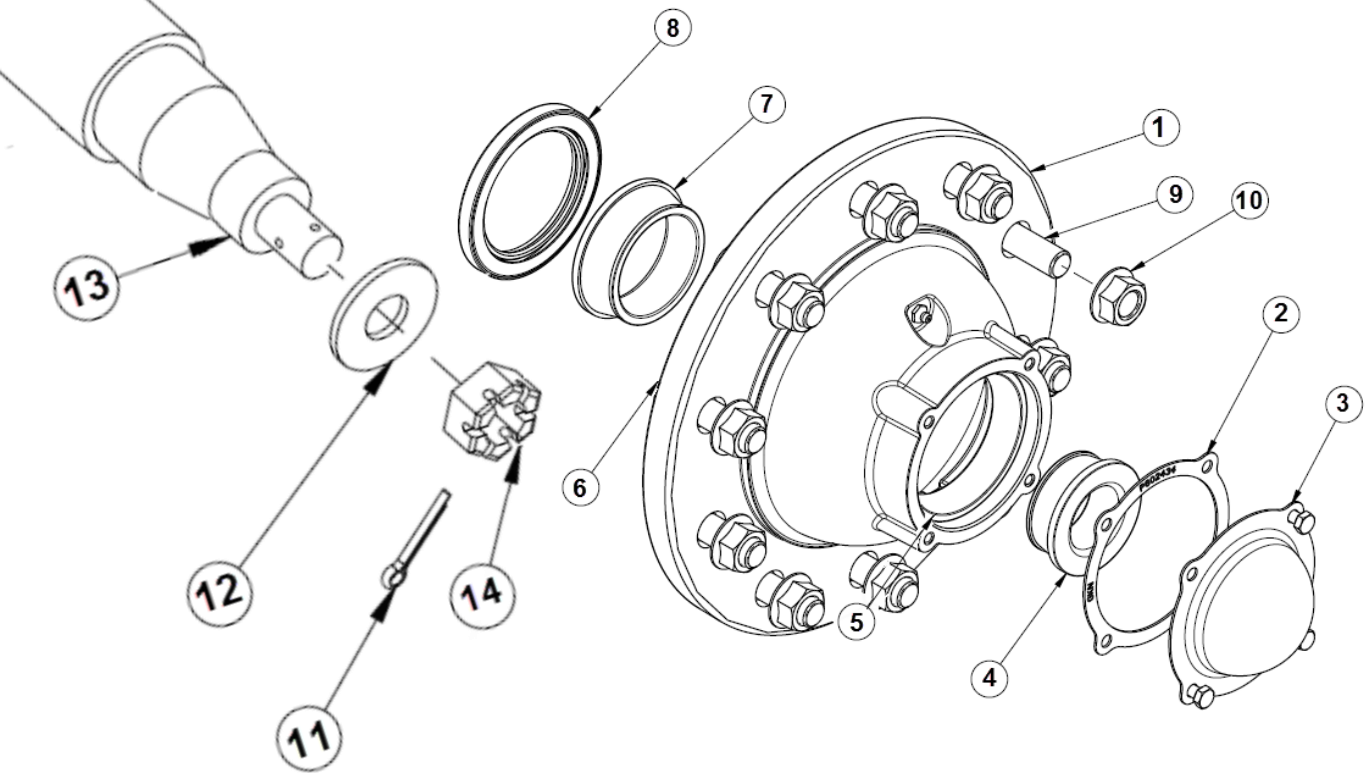


HIGH ROUGHAGE SPIRAL PARTS

HIGH ROUGHAGE SPIRAL PARTS

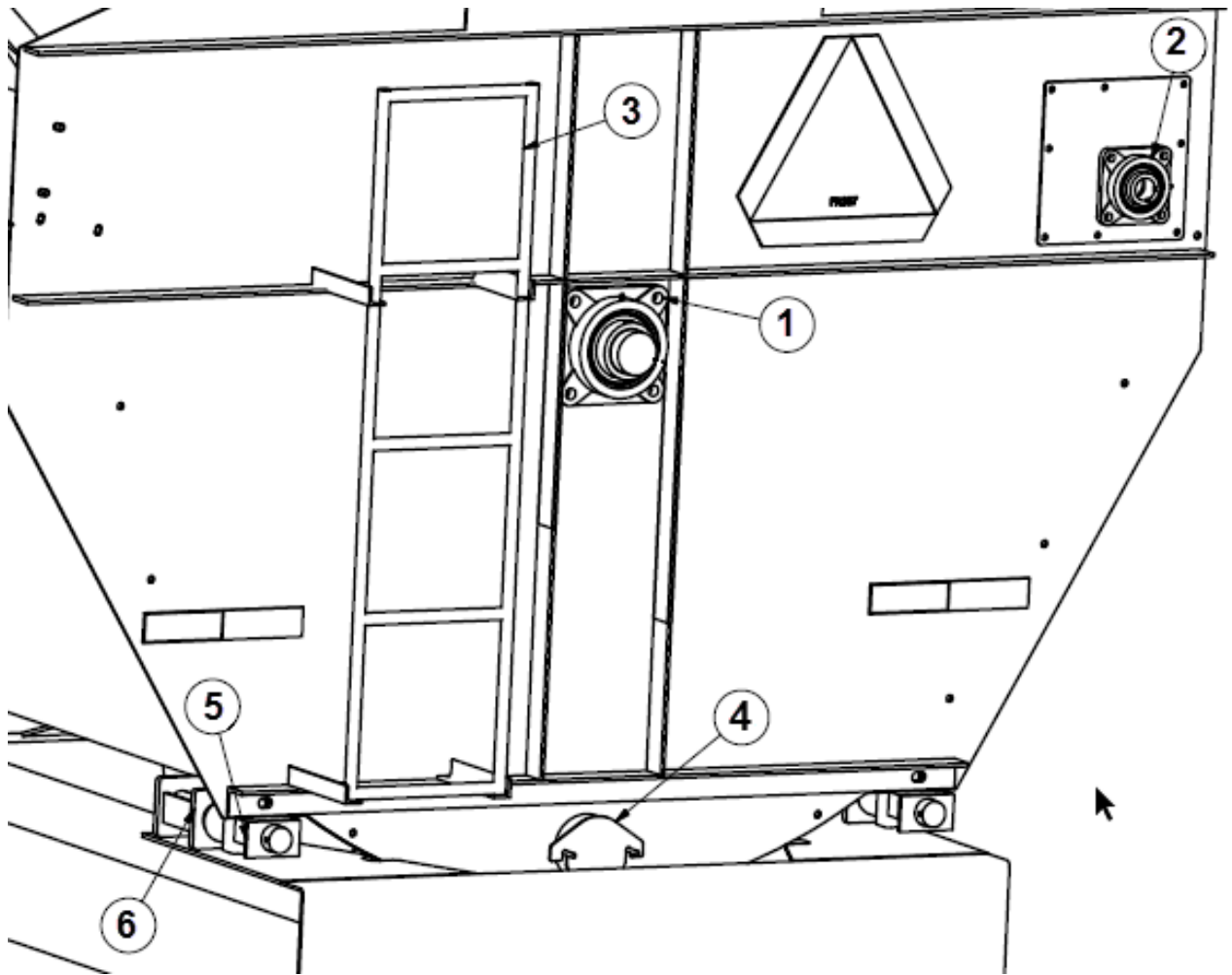
ITEM	PART NUMBER	DESCRIPTION
1	FAC816	500 SPOKE 2.38 X 29", 21 per
2	FAC814	500 SPOKE 1.66 X 29", 3 per
3	FA811	500 SPOKE TO SPOKE BRACE PIPE 1.66" x 34", 3 per
4	FAC810	KICKER SPOKE GUSSET, 500, 4 per
5	FAC811	BACK SPOKE GUSSET, 500, 12 per
10	6 X 6 TRIANGLE	KICKER SPOKE 6 X 6 GUSSET, 500, 2 per
6	FAC717	SWEEP CLEAN BELT, (NEED 27 OF 5/16 X 1.5" BOLTS)
RIGHT DISCHARGE		
ITEM	PART NUMBER	DESCRIPTION ALL SOLD BY FOOT
--	FA 830BF	FRONT SPIRAL FACE MATERIAL (2' PER RIBBON)
--	FA 830BF-H	FRONT SPIRAL FACE MATERIAL W / HOLES,(2' PER RIBBON)
--	FA 830BS	FRONT SPIRAL SUPPORT MATERIAL, (2' PER RIBBON)
7	FA 830FF	BACK SPIRAL FACE MATERIAL (27' PER RIBBON PLUS EACH RIBBON HAS FOUR 3' AND ONE 1.5" SUPPORT PARTS)
8	FA 830FF-H	BACK SPIRAL FACE MATERIAL W / HOLES (27' PER RIBBON)
9	FA 830FS	BACK SPIRAL SUPPORT MATERIAL (27' PER RIBBON)
LEFT DISCHARGE		
ITEM	PART NUMBER	DESCRIPTION SOLD BY FOOT
--	FA 830FF	FRONT SPIRAL FACE MATERIAL (2' PER RIBBON)
--	FA 830FF-H	FRONT SPIRAL FACE MATERIAL W / HOLES (2' PER RIBBON)
--	FA 830FS	FRONT SPIRAL SUPPORT MATERIAL (2' PER RIBBON)
7	FA 830BF	BACK SPIRAL FACE MATERIAL (27' PER RIBBON PLUS EACH RIBBON HAS FOUR 3' AND ONE 1.5" SUPPORT PARTS)
8	FA 830BF-H	BACK SPIRAL FACE MATERIAL W / HOLES (27' PER RIBBON)
9	FA 830BS	BACK SPIRAL SUPPORT MATERIAL (27' PER RIBBON)

SPINDLE, WHEEL HUB AND BEARINGS



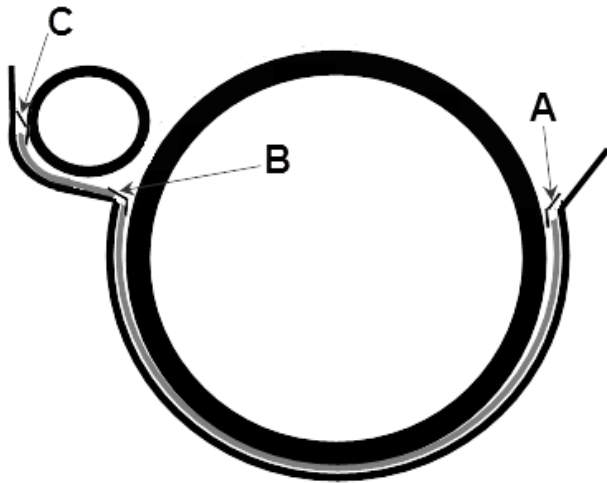
ITEM	PART NUMBER	DESCRIPTION
1	FAC624CA	HUB COMPLETE WITH BEARINGS, CAP, SEAL, AND NUTS
2	FAC624GAS	HUB CAP GASKET
3	FAC624HC	HUB CAP
4	FAC624OB	OUTER BEARING CONE
5	FAC624OR	OUTER BEARING RACE
6	FAC624IR	INNER BEARING RACE
7	FAC624IB	INNER BEARING CONE
8	FAC624S	SEAL
9	FA622HB	WHEEL STUD
10	FA621WN	WHEEL NUT
11	FA620K	COTTER PIN
12	FA620W	SPINDLE WASHER
13	FAC605	SPINDLE COMPLETE
14	FA620N	SPINDLE NUT

REAR EXTERNAL



ITEM	PART NUMBER	DESCRIPTION
1	FAC1104FB-4	2 15/16" FLANGE FOUR BOLT BALL BEARING
2	FAC1101FB-4	1 1/2" FLANGE FOUR BOLT BALL BEARING
3	FAC590L	LADDER (WELD ON)
4	FAC003	BUNG
5	FA641-2.125	BOX SCALE MOUNTS 2 1/8" BAR (SET OF 4)
6	FA640-2.125	TRAILER SCALE MOUNTS 2 1/8" BAR (SET OF 4)

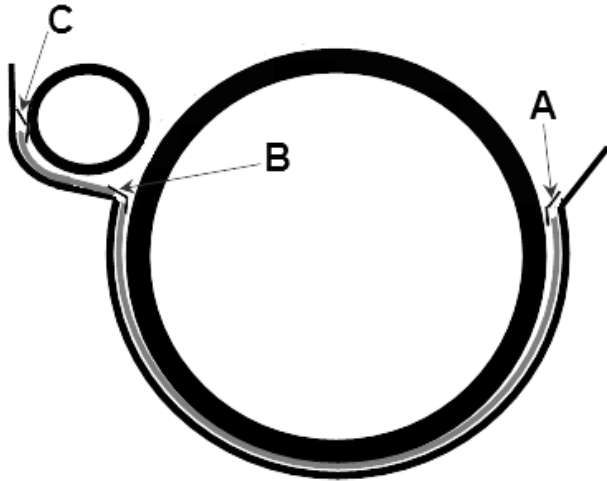
POLY LINERS, 500
RIGHT HAND DISCHARGE



STRIP CHART			
	A	B	C
Front	FA8510	FA9610	FA7520
Middle	FA7520	FA9620	FA7520
Middle-Back	'-----	FA9630	'-----
Back	FA9530	FA9640	FA9730

	PART NUMBER	DESCRIPTION
	FAC739KR	POLY FLOOR LINER KIT, MODEL 500
	FAC739APR	POLY AUGER LINER KIT, MODEL 500
	FAC739-1R	FRONT POLY SHEET, MODEL 500
	FAC739-2R	2nd POLY SHEET, MODEL 500
	FAC739-3R	3rd POLY SHEET, MODEL 500
	FAC739-4R	4 TH POLY SHEET, MODEL 500
	FAC739-5R	BACK POLY SHEET, MODEL 500
	FA757	CARRIAGE BOLT (Qty: Floor- 39 Auger- 23)
	FA756B	ELEVATOR BOLT (Qty: Floor- 57 Auger- 7)
	FA755	5/16" TORX SCREW (Qty: Floor 31; Auger-30)

POLY LINERS, 500
LEFT HAND DISCHARGE



STRIP CHART			
	A	B	C
Front	FA8510	FA9610	FA7520
Middle	FA7520	FA9620	FA7520
Middle-Back	'-----'	FA9630	'-----'
Back	FA9530	FA9640	FA9730

	PART NUMBER	DESCRIPTION
	FAC739KL	POLY FLOOR LINER KIT, MODEL 500
	FAC739APL	POLY AUGER LINER KIT, MODEL 500
	FAC739-1L	FRONT POLY SHEET, MODEL 500
	FAC739-2L	2nd POLY SHEET, MODEL 500
	FAC739-3L	3rd POLY SHEET, MODEL 500
	FAC739-4L	4 TH POLY SHEET, MODEL 500
	FAC739-5L	BACK POLY SHEET, MODEL 500
	FA757	CARRIAGE BOLT (Qnt: Floor- 39 Auger- 23)
	FA756B	ELEVATOR BOLT (Qnt: Floor- 57 Auger- 7)
	FA755	5/16" TORX SCREW (Qnt: Floor 31; Auger-30)